

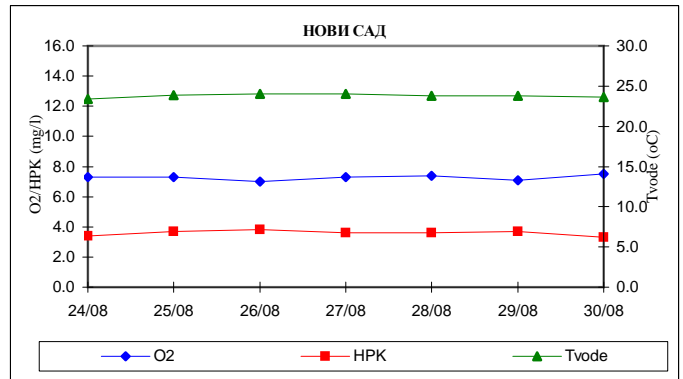
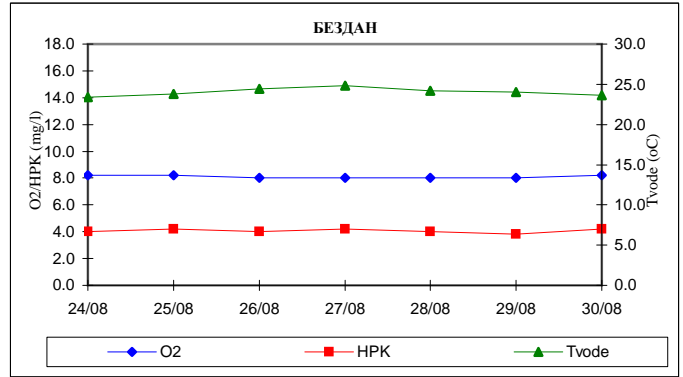
01.08.2011.

30.08.2011.

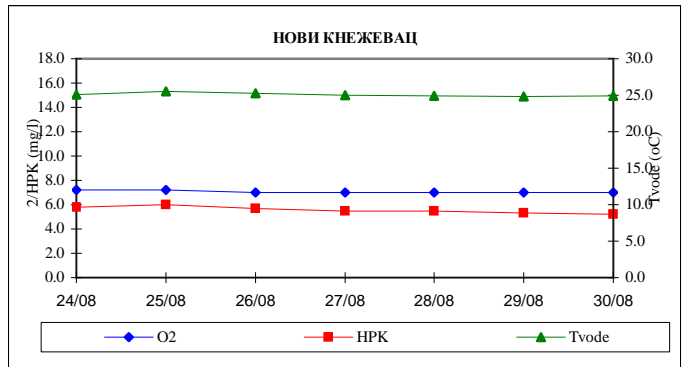
**ДУНАВ**

:  
m<sup>3</sup>/s.

2060-1598



**ТИСА**

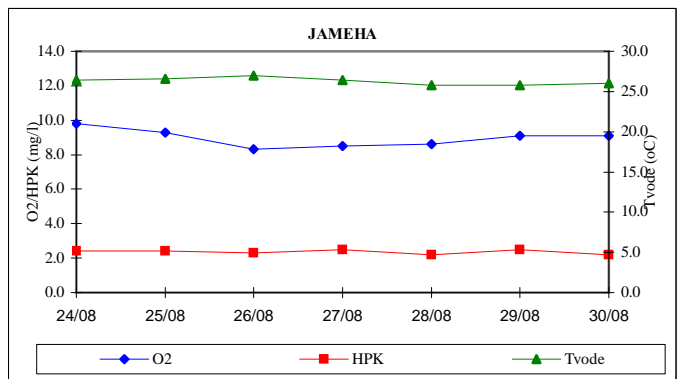


**САВА**

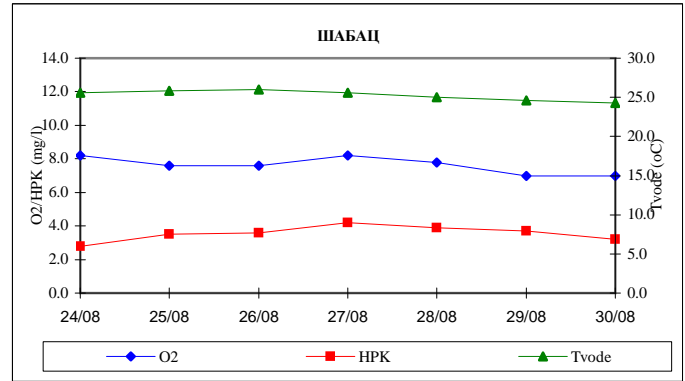
:  
% 2

(24.08-26.08.).

III

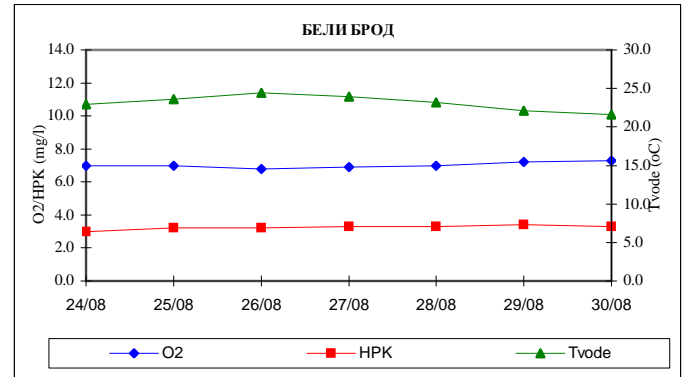


422-377 m<sup>3</sup>/s.



## КОЛУБАРА

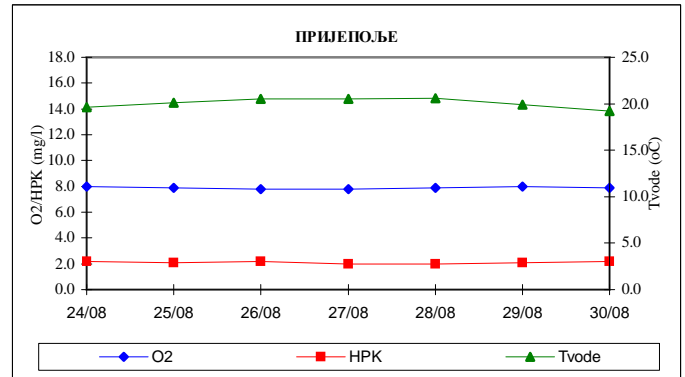
2.12-1.90 m<sup>3</sup>/s.



## ЛИМ

m<sup>3</sup>/s.

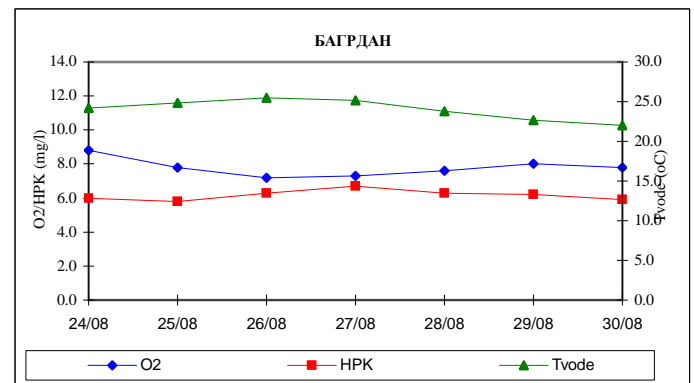
9.22-8.66



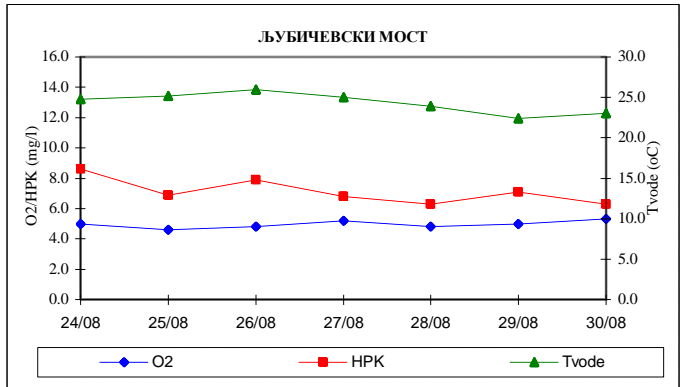
## ВЕЛИКА МОРАВА

m<sup>3</sup>/s.

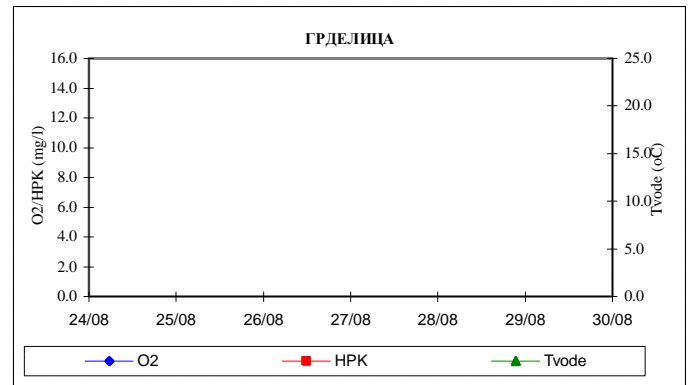
27.8-41.3



:  
 m<sup>3</sup>/s. 38.0-42.0  
 ,  
 % 2 III  
 ,

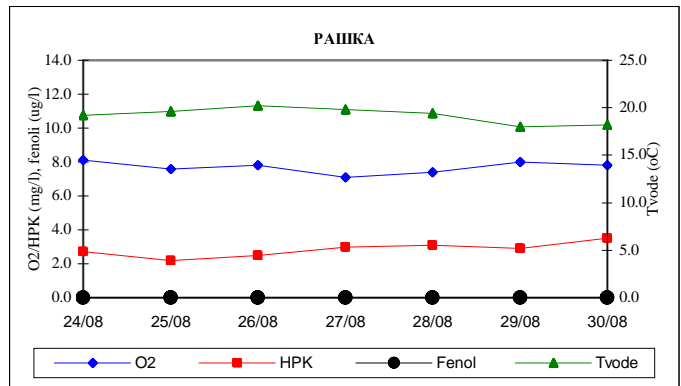


### ЈУЖНА МОРАВА



### ИБАР

:  
 m<sup>3</sup>/s. 9.50-8.14  
 ,  
 <1.0 µg/l.



:  
 m<sup>3</sup>/s. 14.1-11.3  
 ,  
 <1.0 µg/l.

