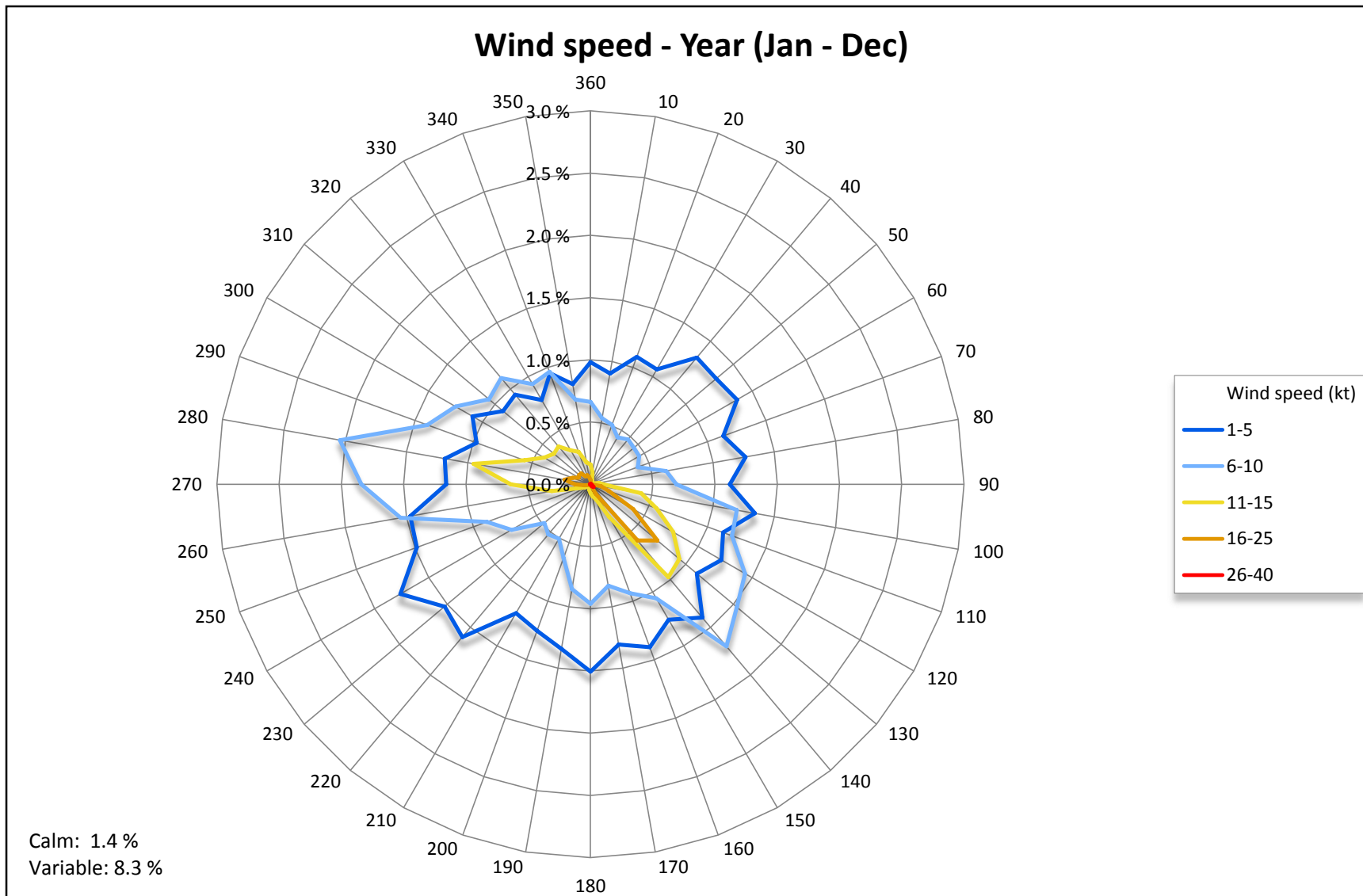


AERODROME CLIMATOLOGICAL SUMMARY

Aerodrome Nikola Tesla, Belgrade, Serbia

LYBE

Parameter	jan	feb	mar	apr	may	jun	jul	aug	sep	oct	nov	dec	year
Average pressure (hPa)	1019.5	1016.9	1015.7	1014.5	1014.2	1014.6	1014.4	1015.0	1016.8	1019.4	1018.1	1021.3	1016.7
Average temperature (°C)	1.2	3.0	7.9	13.3	17.6	21.4	23.8	23.2	18.5	12.7	7.8	2.7	12.8
Average max temperature (°C)	4.6	6.9	12.6	18.6	22.8	26.7	29.4	29.1	23.9	17.8	12.3	5.8	17.5
Total number of days with T > 30°C	0.0	0.0	0.0	0.2	2.2	9.8	14.8	14.4	4.6	0.2	0.0	0.0	46.2
Average min temperature (°C)	-2.1	-0.8	3.1	7.6	11.9	15.6	17.3	17.0	13.2	7.9	3.6	-0.4	7.8
Total number of days with T < 0°C	17.2	13.8	5.6	0.1	0.0	0.0	0.0	0.0	0.0	0.5	5.2	15.4	57.8
Average relative humidity (%)	83.9	78.0	68.6	63.6	67.9	66.9	61.6	62.0	67.5	74.2	78.0	84.2	71.3
Total number of days with rain (> 1 mm)	8.8	9.6	12.5	13.0	14.5	11.6	8.7	7.8	9.8	9.8	9.8	10.2	126.1
Total number of days with snow (> 1 cm)	6.8	6.4	2.8	0.0	0.0	0.0	0.0	0.0	0.0	0.0	1.7	4.9	22.6
Total number of days with thunderstorms	0.0	0.1	0.8	1.9	7.7	7.9	6.5	5.4	2.8	0.9	0.4	0.2	34.6
Total number of days with fog (prevailing visibility < 1000 m)	8.9	5.2	1.9	1.4	1.1	0.5	0.5	1.5	2.2	4.7	7.5	10.2	45.6
Average number of days with wind speed ≥30 kt	0.9	0.8	1.5	1.3	0.5	0.6	0.5	0.5	0.4	0.7	1.2	0.8	9.7



For more details follow the link: http://www.hidmet.gov.rs/podaci/meteorologija/LYBE_airport_climatology.pdf

Data based on METAR report for LYBE for time period 2005-2017