

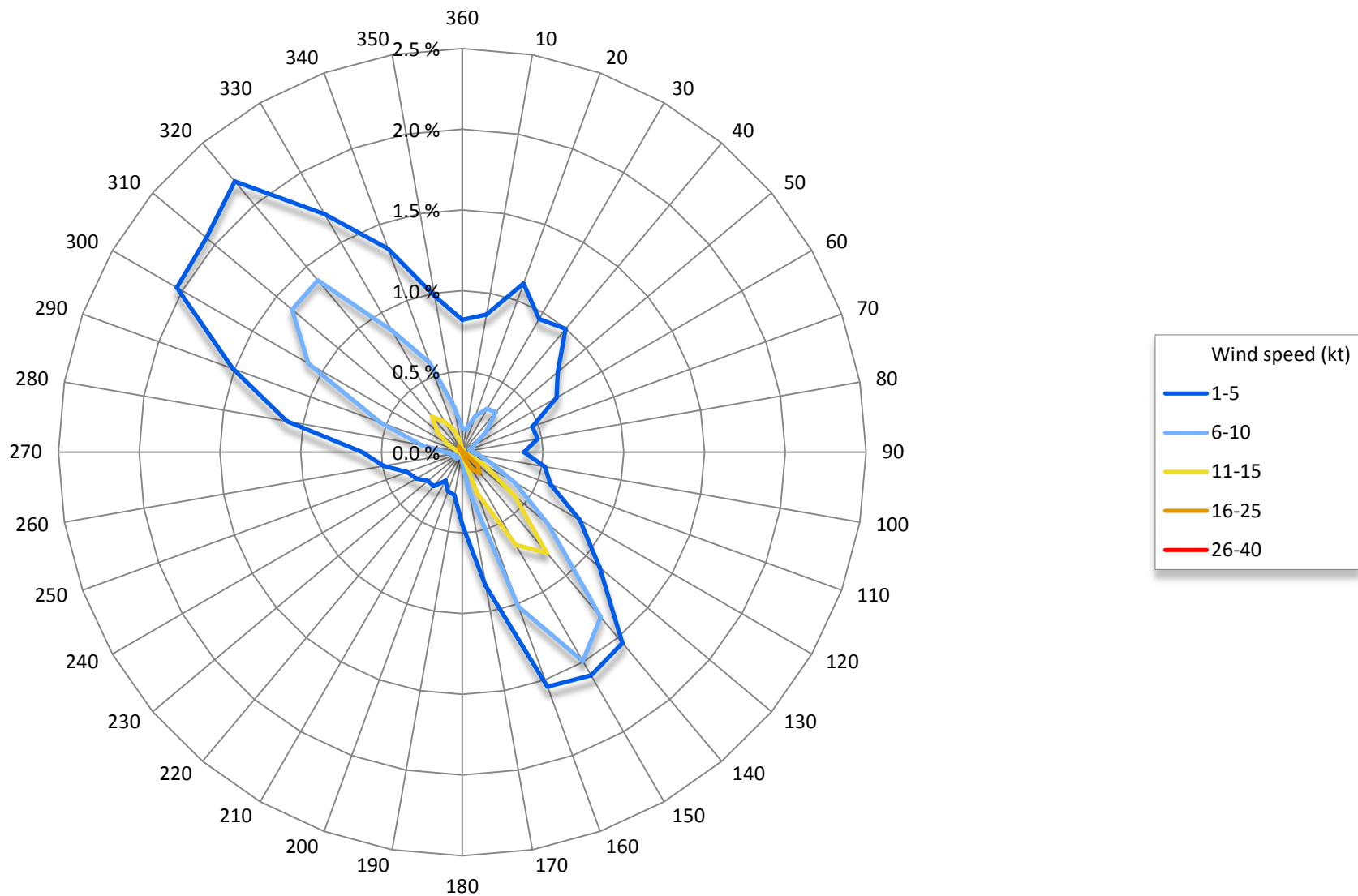
AERODROME CLIMTOLOGICAL SUMMARY

Aerodrome Ladjevci, Kraljevo, Serbia

LYKV

<i>Parameter</i>	<i>jan</i>	<i>feb</i>	<i>mar</i>	<i>apr</i>	<i>may</i>	<i>jun</i>	<i>jul</i>	<i>aug</i>	<i>sep</i>	<i>oct</i>	<i>nov</i>	<i>dec</i>	<i>year</i>
Average pressure (hPa)	1018.0	1017.6	1015.7	1014.6	1014.2	1014.7	1014.6	1016.1	1017.3	1019.3	1017.7	1020.2	1016.7
Average temperature (°C)	0.0	2.6	7.3	12.4	16.2	20.6	22.4	22.2	17.3	11.5	7.4	1.9	11.8
Average max temperature (°C)	4.5	7.9	13.4	19.1	22.9	27.2	29.6	30.2	24.7	18.4	13.3	6.2	18.1
Total number of days with T > 30°C	0.0	0.0	0.0	0.5	2.0	10.5	15.0	18.7	5.8	0.2	0.0	0.0	52.7
Average min temperature (°C)	-4.5	-2.4	0.9	5.1	9.4	14.0	15.0	14.4	10.5	5.5	1.9	-2.2	5.6
Total number of days with T < 0°C	23.6	17.8	11.9	1.7	0.1	0.0	0.0	0.0	0.1	2.1	9.3	19.2	85.8
Average relative humidity (%)	87.8	83.3	73.3	71.4	77.0	75.6	72.7	70.5	74.7	81.8	84.5	88.0	78.4
Total number of days with rain (> 1 mm)	8.5	9.1	13.1	13.2	15.5	12.2	10.3	6.2	9.5	10.1	9.0	10.2	126.9
Total number of days with snow (> 1 cm)	9.8	7.3	3.1	0.3	0.0	0.0	0.0	0.0	0.0	0.0	1.0	6.1	27.6
Total number of days with thunderstorms	0.1	0.1	0.2	2.0	8.0	8.0	7.7	5.5	2.7	0.3	0.4	0.1	35.1
Total number of days with fog (prevailing visibility < 1000 m)	8.7	3.8	2.7	2.9	7.2	4.4	4.5	6.5	7.3	12.3	10.0	9.5	79.8
Average number of days with wind speed ≥ 30 kt	0.6	0.5	0.5	0.6	0.1	0.2	0.1	0.5	0.2	0.0	0.5	0.8	4.6

Average wind - Year (Jan - Dec)



Calm: 10.1 %
 Variable: 39.1 %

For more details follow the link: <http://www.hidmet.gov.rs/podaci/meteorologija/Klimatografija%20aerodroma%20-%20KRALJEVO.pdf>

Data based on METAR report for LYKV for time period 2008-2019