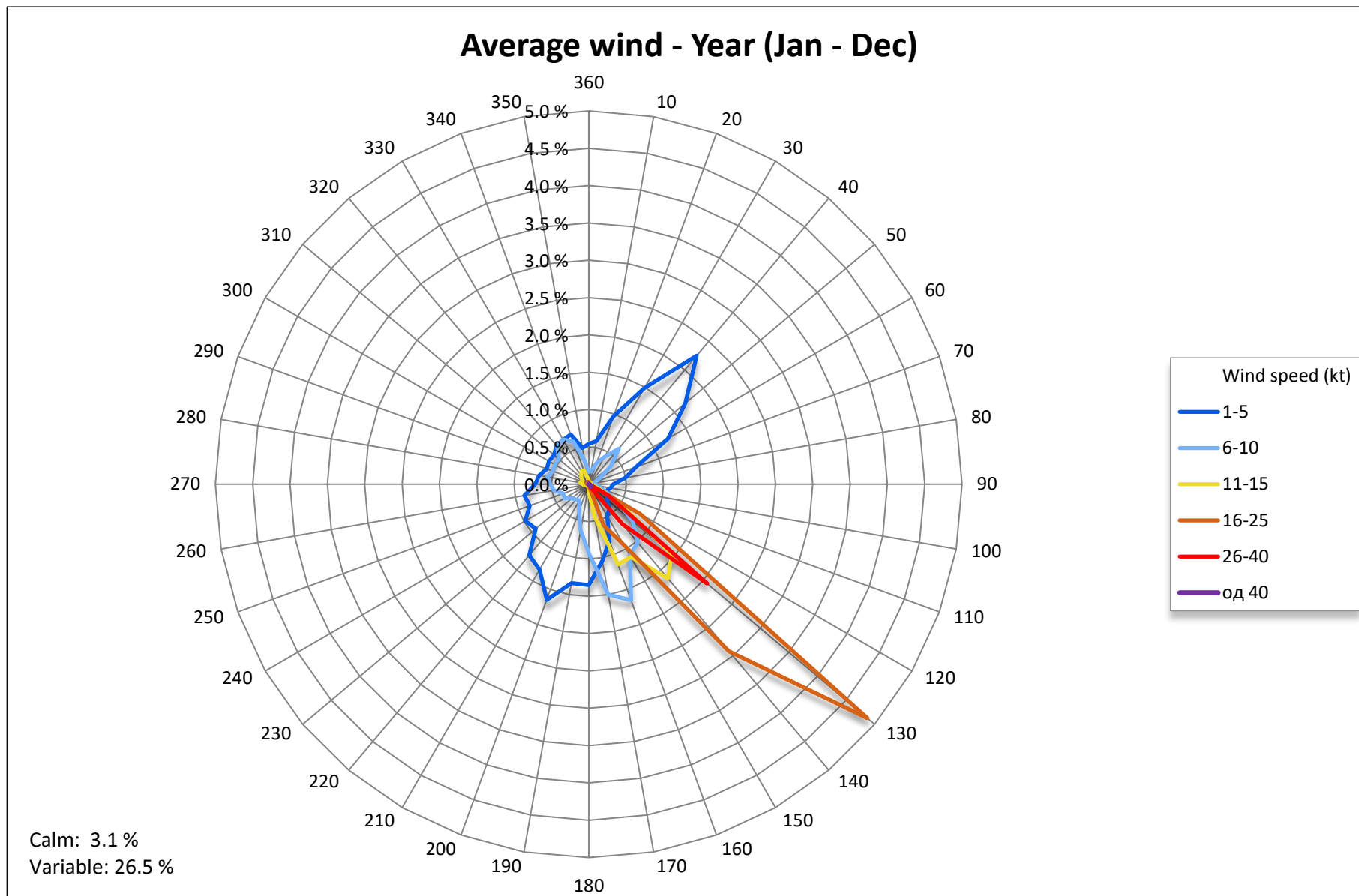


# **AERODROME CLIMTOLOGICAL SUMMARY**

***Aerodrome Vrsac, Vrsac, Serbia***

***LYVR***

| <b><i>Parameter</i></b>  | <b><i>jan</i></b> | <b><i>feb</i></b> | <b><i>mar</i></b> | <b><i>apr</i></b> | <b><i>may</i></b> | <b><i>jun</i></b> | <b><i>jul</i></b> | <b><i>aug</i></b> | <b><i>sep</i></b> | <b><i>oct</i></b> | <b><i>nov</i></b> | <b><i>dec</i></b> | <b><i>year</i></b> |
|--|-------------------|-------------------|-------------------|-------------------|-------------------|-------------------|-------------------|-------------------|-------------------|-------------------|-------------------|-------------------|--------------------|
| <b>Average pressure (hPa)</b>  | 1018.7            | 1017.2            | 1015.3            | 1014.2            | 1013.8            | 1013.7            | 1013.7            | 1015.3            | 1016.6            | 1019.0            | 1018.2            | 1020.7            | 1016.4             |
| <b>Average temperature (°C)</b>  | 1.7               | 3.5               | 8.0               | 14.0              | 17.9              | 21.4              | 23.3              | 23.7              | 18.7              | 12.9              | 8.8               | 3.2               | 13.1               |
| <b>Average max temperature (°C)</b>  | 5.0               | 7.1               | 12.8              | 19.2              | 23.5              | 27.1              | 29.6              | 30.1              | 24.5              | 18.1              | 13.0              | 6.2               | 18.0               |
| <b>Total number of days with<br/>&gt; 30°C</b> T                             | 0.0               | 0.0               | 0.0               | 0.4               | 1.8               | 9.7               | 15.5              | 17.9              | 5.2               | 0.1               | 0.0               | 0.0               | 50.6               |
| <b>Average min temperature (°C)</b>  | -2.1              | -0.5              | 2.8               | 7.6               | 11.5              | 14.8              | 15.9              | 16.2              | 12.5              | 7.5               | 4.4               | -0.4              | 7.5                |
| <b>Total number of days with T &lt; 0°C</b>                                  | 17.2              | 13.1              | 8.4               | 0.4               | 0.0               | 0.0               | 0.0               | 0.0               | 0.2               | 2.3               | 5.9               | 14.8              | 62.2               |
| <b>Average relative humidity (%)</b>   | 80.4              | 77.7              | 70.5              | 64.6              | 69.9              | 70.1              | 65.3              | 61.9              | 67.5              | 72.7              | 74.1              | 82.4              | 71.4               |
| <b>Total number of days with rain<br/>(&gt; 1 mm)</b>                        | 8.6               | 8.6               | 12.0              | 11.8              | 12.9              | 12.6              | 8.4               | 5.8               | 9.6               | 8.9               | 8.6               | 9.7               | 117.5              |
| <b>Total number of days with snow<br/>(&gt; 1 cm)</b>                        | 7.5               | 5.9               | 2.3               | 0.2               | 0.0               | 0.0               | 0.0               | 0.0               | 0.0               | 0.0               | 1.0               | 4.5               | 21.4               |
| <b>Total number of days with<br/>thunderstorms</b>                           | 0.0               | 0.2               | 0.5               | 1.6               | 7.5               | 7.9               | 6.9               | 4.5               | 2.4               | 0.5               | 0.0               | 0.2               | 32.2               |
| <b>Total number of days with fog<br/>(prevailing visibility &lt; 1000 m)</b> | 6.0               | 2.5               | 1.5               | 0.9               | 1.6               | 2.2               | 1.5               | 1.5               | 2.8               | 2.8               | 3.7               | 6.5               | 33.5               |
| <b>Average number if days with wind<br/>speed ≥30 kt</b>                     | 9.7               | 8.9               | 7.9               | 8.3               | 6.5               | 4.3               | 3.6               | 5.6               | 5.6               | 10.6              | 12.5              | 8.3               | 91.8               |



For more details follow the link: [http://www.hidmet.gov.rs/podaci/meteorologija/LYVR\\_airport\\_climatology.pdf](http://www.hidmet.gov.rs/podaci/meteorologija/LYVR_airport_climatology.pdf)

Data based on METAR report for LYVR for time period 2008-2018