



Climate characteristics in Serbia for 2016

Warm and wet 2016

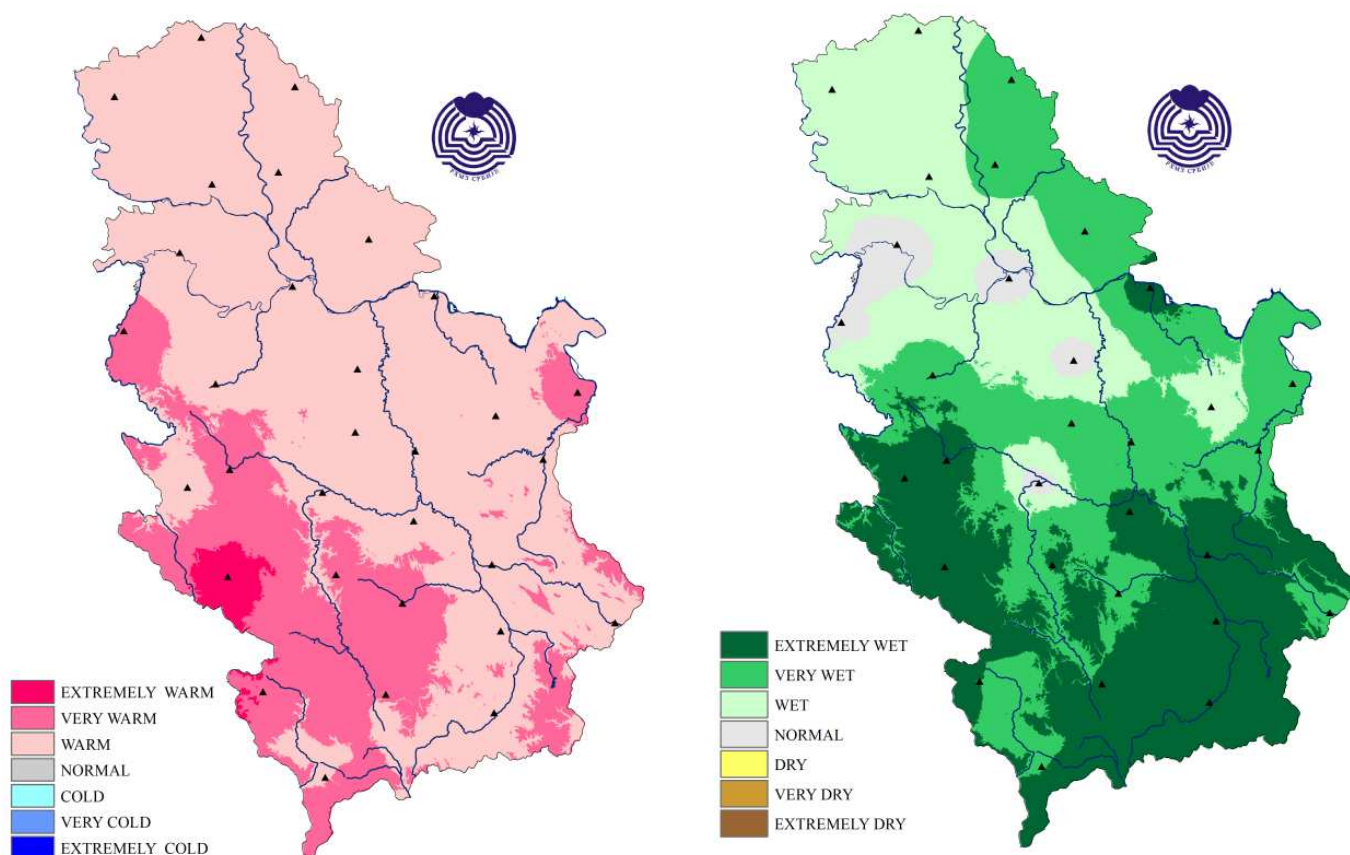


Figure 1. Mean temperature percentile category (left) and precipitation percentile category (right) for 2016

- Ten out of twelve warmest years were registered after 2000 (in the 1951-2016 period). Year 2016 was the twelfth warmest in Serbia (Figure 2)
- Third warmest winter 2015/2016 in Serbia. Lowest number of days with snow at Crni Vrh mountain (east Serbia) meteorological station
- Third wettest spring in Serbia
- Warmest February on record in Serbia (Figures 3 and 4)
- Wettest March on record in Serbia (Figure 5)
- Fourth warmest April on record in Serbia
- Third wettest July on record at east and south of Serbia
- Second wettest November in south Serbia, at Kopaonik mountain and Nis, third wettest at Leskovac
- Fourth driest December on record in Serbia, in Negotin (east) and Sremska Mitrovica (northwest) driest on record (Figure 6)



Warmest years in Serbia - period 1951-2016.

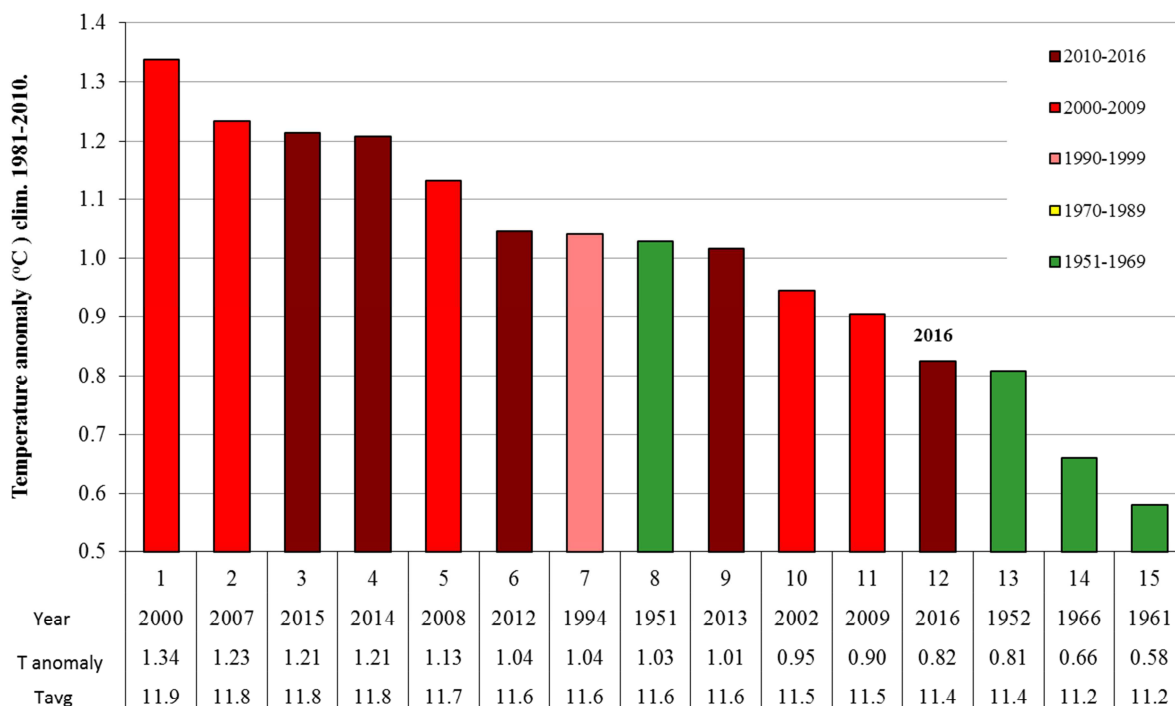


Figure 2.

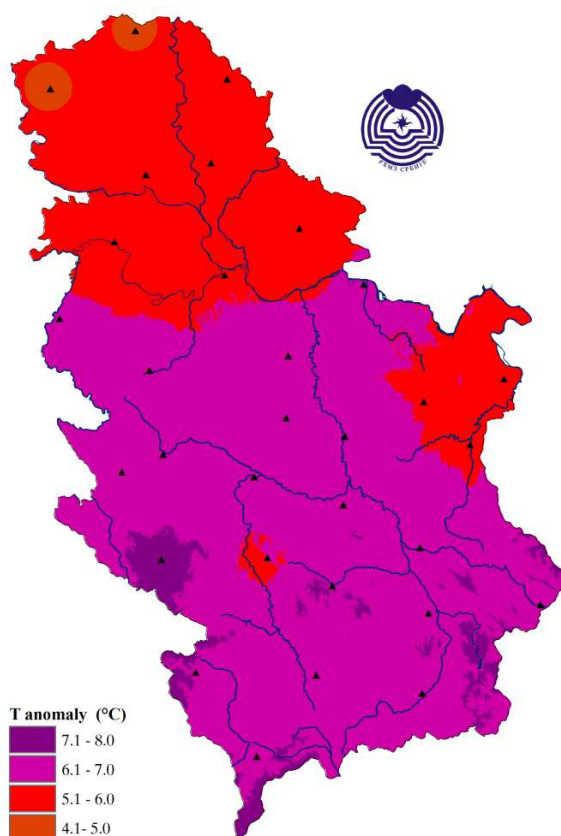


Figure 3. February mean temperature anomaly from 1981-2010 climatology



Warmest February in Serbia - 1951-2010 period

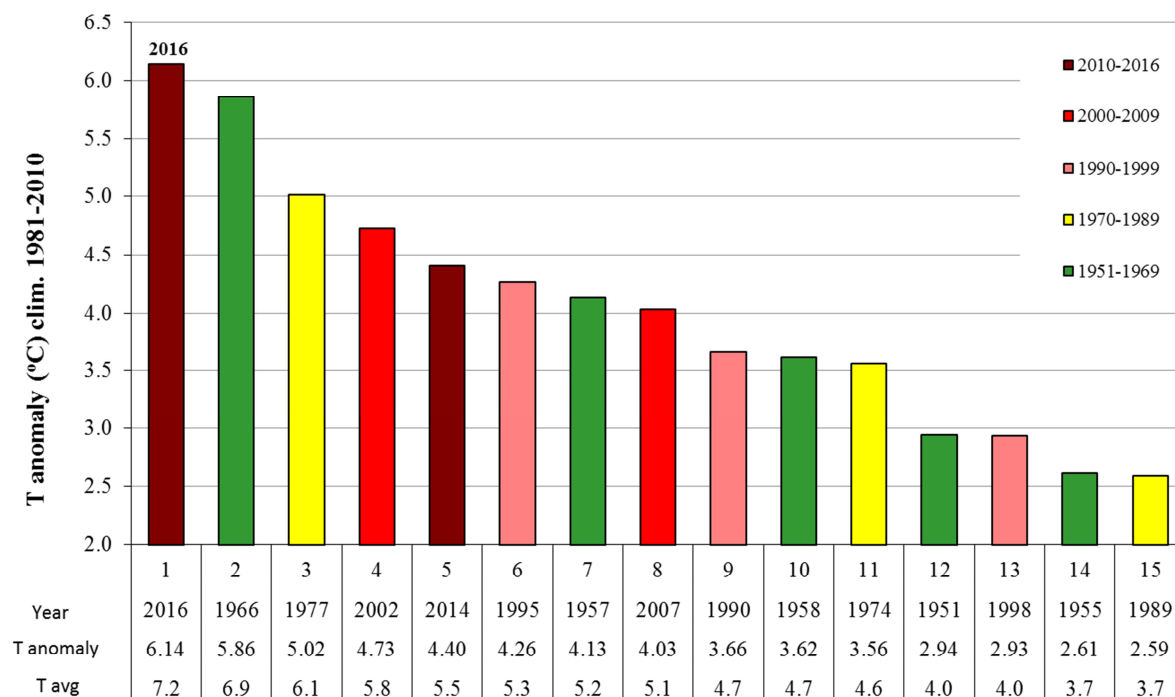


Figure 4.

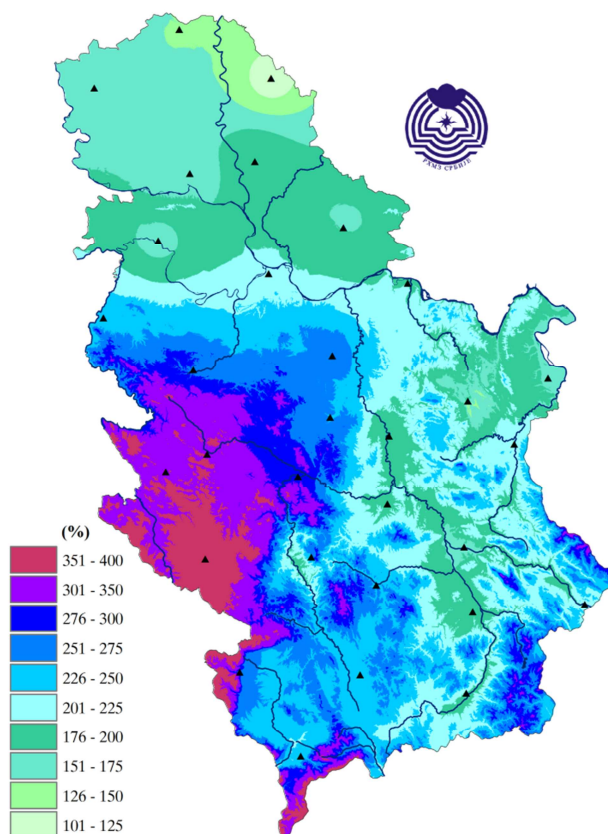


Figure 5. March precipitation sums in percent of normal (1981-2010)

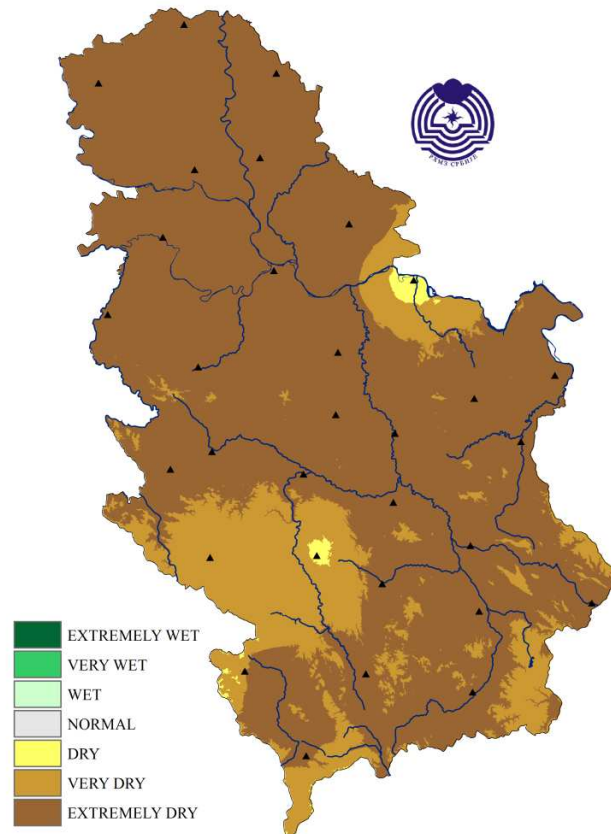


Figure 6. December precipitation percentile categories with respect to 1981-2010 climatology

Read more in the annual bulletin on the link: <http://www.hidmet.gov.rs/podaci/meteorologija/eng/2016.pdf>